

FERMOSTOCK



Shelving system in anodised aluminium
with polymer or aluminium shelf inserts

6611 / 6622 / 6811

Restaurant, commercial kitchen or cafeteria? Food business or hospital? No kitchen or cold room is complete without functional and hygienic racks for food or kitchenware. For your shelving needs, trust the quality of Fermostock. A 100% European brand offering food-safe shelving systems designed for professional kitchens and refrigeration setups — as well as for washrooms, cleanrooms, and medical or pharmaceutical storage areas.

Why choose Fermostock 6611 / 6622 / 6811 shelving systems:

- ✓ *load capacity up to 900 kg per unit & up to 250 kg per level*
- ✓ *corrosion-resistant materials*
- ✓ *NF and NSF certified (hygiene-compliant)*
- ✓ *always allows for optimal configuration*
- ✓ *safe for direct contact with food*



Fermostock, premium shelving system.

6611 / 6622 / 6811



100% food-grade polymer storage surface



FERMOSTOCK

Quick assembly

Easy maintenance

Maximum accessibility

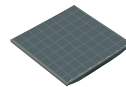
Excellent stability

100% recyclable materials

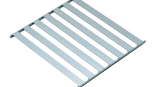
6611



6622



6811



Premium *shelving* system.

Simple and hygienic system

Fermostock 6611 / 6622 / 6811 is a high-performance shelving system based on modular components. It is ideally suited for use in refrigerated areas, catering and professional kitchens, and effortlessly supports an evenly distributed load of up to 900 kg per unit between two uprights.

Fermostock 6611 / 6622 / 6811 meets the highest standards of durability and structural strength. The system complies with all manufacturing norms and hygiene regulations. Thanks to its rounded corners and flat surfaces, Fermostock shelving is certified with both the **NF food hygiene label** (NF031; AFNOR Certification) and the **NSF label** (U.S. certification). European food-contact compliance certificates are also available.

With all these qualities, **Fermostock shelving** is highly recommended for use in cold and freezer rooms down to **-40°C**, professional kitchens, washrooms, laboratories, and cleanrooms. It is also perfectly suited for dry storage of food, kitchen utensils, or catering linen.



No crossed bracing required.
Fully accessible from both sides.

Fermostock 6611 / 6622 / 6811 is available in:

- **3 shelf depths***: 360 mm - 460 mm - 560 mm
- **4 upright heights**: 1685 mm - 1800 mm - 2135 mm - 2435 mm
- **10 shelf lengths** from 660 mm up to 1740 mm
- **Expandable** in straight lines or corner configurations (L, U, E, T)

*: Fermostock 6622 not available in 360 mm

FERMOSTOCK

Stable and modular system

Thanks to its wide range of modular components, any space can be effortlessly fitted with Fermostock shelving systems.

It all begins with the **base shelving unit**, consisting of 2 uprights and a freely selectable number of levels, each composed of horizontal beams and shelf inserts. The uprights feature mounting holes into which conical clip-on brackets (a Fermod patent) can be easily inserted. The horizontal beams are then pressed onto these brackets, followed by the placement of hygienic and low-maintenance shelf inserts – either polymer (6611 / 6622) or aluminium (6811). All shelving surfaces are suitable for use in temperatures from -40°C to +80°C.

Extension units follow the same principle, requiring only one upright. To create a 90° corner extension (L, U, E, or T configurations), anodised aluminium corner connectors are used. These slide over the horizontal beams of the base unit, ensuring secure and accessible corner construction.

Stability increases as the shelving unit is loaded.



Corner connectors ensure open corners when building 90° extensions

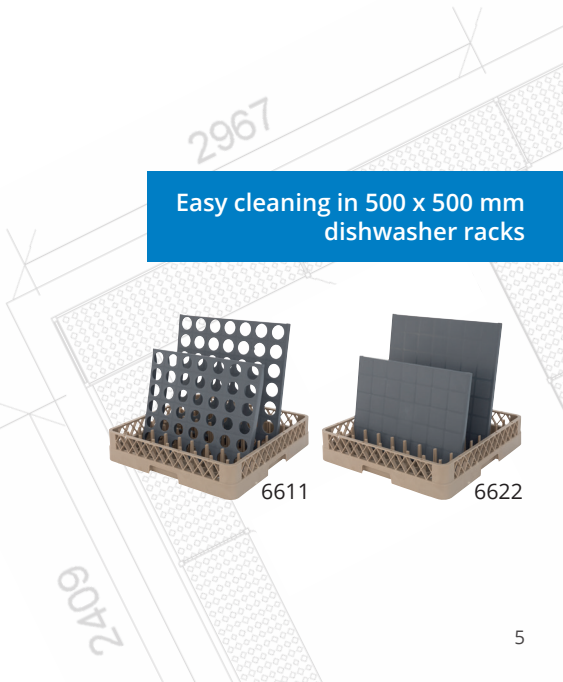
Optional wall/floor fixing for added safety (for ship-board and other mobile installations)



Up to 250 kg* per level
(see table p. 9)

Up to 200 kg* per level
(see table p. 8)

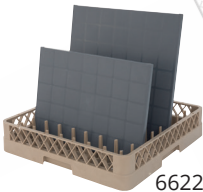
Up to 175 kg* per level
(see table p. 7)



Easy cleaning in 500 x 500 mm dishwasher racks



6611



6622

Fermostock, assembled in 1, 2, 3 ...

Assembling Fermostock racks is extremely easy and takes virtually no time.
No tools are required.

1. Insert the clip-on brackets into the uprights at the desired height
2. Slide the horizontal beams over the brackets
3. Place the shelf inserts between the horizontal beams
4. Adjust stability if needed using the adjustable composite feet



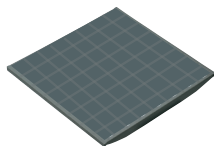
Maximum load capacity

Fermostock offers true peace of mind – depending on the type and length, each level can support up to **250 kg**.

A suitable solution for every application



6611
max. 175 kg/level
Perforated polymer
shelves



6622
max. 200 kg/level
solid polymer
shelves



6811
max. 250 kg/level
Slatted shelves in
anodised aluminium

LOAD CAPACITY PER BASE SHELVING UNIT = **900 KG**

max. 600 kg between two uprights when using corner connectors



Fermostock 6611

Shelving unit in anodised aluminium with perforated polymer shelves. System 6611 is available in 4 upright heights, 3 depths, and 10 shelf widths, making it the ready-to-use shelving solution for all fresh and frozen products.

- ✓ Food-safe (NF / NSF)
- ✓ Dishwasher-safe (up to 90°C)
- ✓ Tool-free assembly

Product features:

Uprights (4): Precisely anodised aluminium (20 micron), profile 27 x 27 mm
 Upright heights 1685 mm = max. 10 levels
 1800 mm = max. 11 levels
 2135 mm = max. 13 levels
 2435 mm = max. 15 levels

Distance between levels: 150 mm

Depths (3): 360 mm - 460 mm - 560 mm (measured externally)

Shelf inserts (10): Grey polymer modules with 40 mm perforations
 Module A: 300 mm; module B: 420 mm
 Food-safe certified and dishwasher-safe (up to 90°C)

For depths of 360 mm and 560 mm, Gastronorm containers can be suspended between the crossbars. For depth of 460 mm, retention trays are used.

Length (mm)	660	780	900	960	1080	1200	1320	1500	1620	1740
Load (kg)*	175	175	175	175	175	175	175	175	120	120
Shelf level composition	AA	AB	BB	AAA	AAB	ABB	BBB	AABB	ABBB	BBBB

* Maximum load applies with evenly distributed weight and varies by shelf length



Up to 175 kg*
per level



Fermostock 6622

Shelving unit in anodised aluminium with solid polymer shelf inserts. System 6622 is available in 4 upright heights, 2 depths, and 10 shelf widths, making it ideal for bottles, small packages, and dry food storage.

- ✓ Food-safe (NF / NSF)
- ✓ Dishwasher-safe (up to 90°C)
- ✓ Tool-free assembly

Product features:

Uprights (4): Precisely anodised aluminium (20 micron), 27 x 27 mm profile
 Upright heights 1685 mm = max. 10 levels
 1800 mm = max. 11 levels
 2135 mm = max. 13 levels
 2435 mm = max. 15 levels

Distance between levels: 150 mm

Depths (2): 460 mm - 560 mm (measured externally)

Shelf inserts (10): Solid modules in grey polymer
 Module A: 300 mm; module B: 420 mm
 Certified food-safe and dishwasher-safe (up to 90°C)

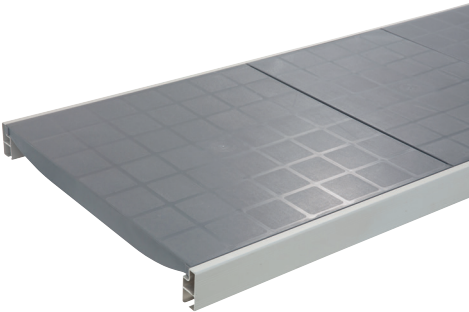
At a depth of 560 mm, Gastronorm containers can be suspended between the crossbars. Retention trays are used at a depth of 460 mm.

Length (mm)	660	780	900	960	1080	1200	1320	1500	1620	1740
Load (kg)*	200	200	200	200	200	200	200	200	120	120
Shelf level composition	AA	AB	BB	AAA	AAB	ABB	BBB	AABB	ABBB	BBBB

* Maximum load applies with evenly distributed weight and varies by shelf length



Up to 200 kg*
per level



Fermostock 6811

Shelving unit in anodised aluminium with flat aluminium slatted shelves. System 6811 is available in 4 upright heights, 3 depths, and 10 shelf widths. The inserts are reversible (semi-circular underside), thus ideal for storing bottles.

- ✓ Food-safe (NF / NSF)
- ✓ Dishwasher-safe (up to 90°C)
- ✓ Tool-free assembly
- ✓ Option: 6811/B shelf surfaces with 10 mm spacing – suitable for laboratory use

Product features:

Uprights (4): Flawlessly anodised aluminium (20 micron), 27 x 27 mm profile
Upright heights 1685 mm = max. 10 levels
1800 mm = max. 11 levels
2135 mm = max. 13 levels
2435 mm = max. 15 levels

Distance between levels: 150 mm

Depths (3): 360 mm - 460 mm - 560 mm (measured externally)

Shelf inserts (10): Modules with slatted structure in anodised aluminium
Module A: 300 mm; module B: 420 mm
Food-safe certified and dishwasher-safe (up to 90°C)

At depths of 360 mm and 560 mm, Gastronorm containers can be suspended between the crossbars. Retention trays are used at a depth of 460 mm.

Length (mm)	660	780	900	960	1080	1200	1320	1500	1620	1740
Load (kg)*	250	250	250	250	250	250	250	250	150	150
Shelf level composition	AA	AB	BB	AAA	AAB	ABB	BBB	AABB	ABBB	BBBB

* Maximum load applies with evenly distributed weight and varies by shelf length



Up to 250 kg*
per level



Specials Fermostock 6611 / 6622 / 6811



Dunnage rack

Sturdy low rack with a single level for storing bulk goods under work tables and in cold rooms (boxes, bags, crates, buckets, etc.).

Mobile rack

Each **Fermostock 6611 / 6622 / 6811** shelving unit is available in a mobile version, designed to enable optimal cleaning. Load capacity up to 240 kg per rack trolley.



Mobile work table

The **Fermostock 6611** mobile rack facilitates storage and supply beneath sinks and wash tables. It ensures optimal workstation organisation, simplifies cleaning, and improves ergonomics.



Wall shelf

The Fermostock wall bracket set allows you to build a single-level wall-mounted rack. Available in depths of 360 or 460 mm, with a maximum load capacity of 75 kg. We also offer standard sets consisting of 2 wall brackets and 1 shelf level. **Fermostock 6611** with a depth of 360 or 460 mm or **Fermostock 6622** with a depth of 460 mm.



Options Fermostock 6611 / 6622 / 6811



1. Wall bracket

- Stainless Steel AISI 304
- Additional safety guaranteed



2. Label holder

- Clip-on
- Label not included (max. 100 x 52 mm)



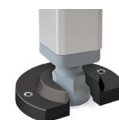
3. Drip trays

- For rack depth 460 mm
- For storing cleaning products or collecting defrost water



4. Base support

- Composite (black)
- For specific applications (boats and other mobile installations)



**Also available:
Fermostock 5711
120 kg/level**



FERMOSTOCK

FERMOSTOCK

Premium *shelving* system.

